

# Aspyre to a brighter future...

Powerful, web-based, portfolio, programme & project management software

Aspyre has been designed to help organisations deliver their projects and programmes on time and within budget.

Aspyre achieves this by:

- **Improving visibility** by showing which programmes and projects are taking place across your organisation
- **Eliminating duplication of effort** by showing who is responsible for what
- **Helping you prioritise** in terms of the benefits each programme or project will deliver
- **Increasing control** and assisting senior managers to identify the projects and programmes that require urgent attention
- Saving time by **significantly reducing** the time taken to produce highlight and status reports. These can be produced within minutes instead of hours or even days
- **Improving programme and project governance** by defining how things will be managed
- Guiding you through a proven benefits realisation process and helping you to **realise the benefits** of your investments
- **Increasing efficiency** by having all relevant information (risks and issues, costs and benefits, documents, resources, stakeholders, lessons learned), in a central repository, making it quick and easy to find relevant data
- **Incorporating best practice** from Managing Successful Programmes (MSP) and PRINCE2 methodologies
- **Facilitating better planning** by enabling people to use historical information and lessons learned
- **Enabling collaborative working** by sharing data across partner organisations
- **Improving communication** with key stakeholders
- Making your programme and project meetings **more effective** by ensuring that actions are captured and emailed to people within minutes of a meeting taking place

### Flexible pricing

Software as a Service (SaaS) monthly rental or perpetual licence (one-off, capital cost)

**Available anytime**, anywhere with an internet connection

**Painless upgrades**—no patches for you to download or install

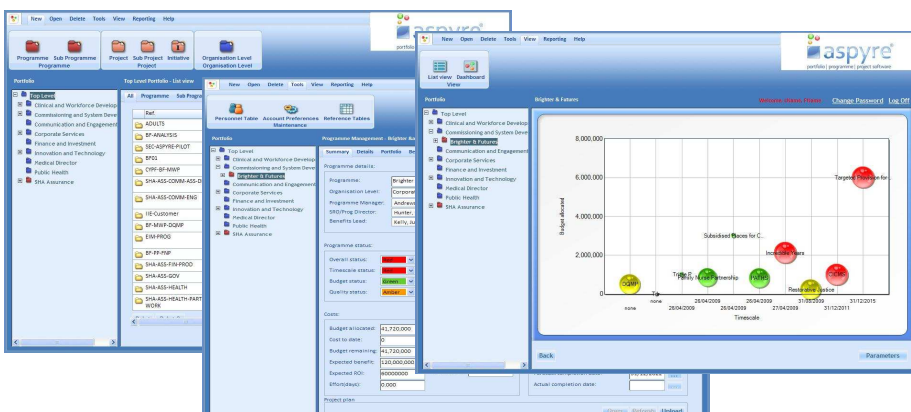
*"For the first time in our organisation we can see at a glance where we are in terms of overall progress on the programmes and projects that underpin it."*

*"Aspyre's benefits functionality is comprehensive and is an invaluable tool for programme & project teams involved in realising, measuring and tracking benefits."*

*"Aspyre is intuitive and easy to use."*

*"Healthcare in our new NHS requires us to operate with an increased business focus which should incorporate recognised programme & project management. I believe that Aspyre is unique in facilitating this process by giving it structure and transparency to our new way of providing healthcare."*

*"The level of support we have received has been excellent."*



**For further information please contact:**

Mosaique

Central Boulevard

Blythe Valley Business Park

Solihull B90 8AG

Tel: +44(0)1564 711 201

Fax: +44(0)1564 711 001

Email: [info@mosaiquegroup.com](mailto:info@mosaiquegroup.com)